



# Welcome to Winslow Church of England School



## 'Let your light shine'

In the same way, let your light shine before others, so that they may see your good works and give glory to your Father in heaven.'

*(Matthew 5:16)*

# Our School Vision and Values

Our Vision and values are at the core of everything we do. They underpin our teaching and learning, and provide an environment which prepares our pupils as confident, happy and caring citizens. We are proud to be a church school and enjoy good links with the parish and our community.

We strive to offer a high quality rounded education for our pupils in context of the Christian values of kindness, forgiveness, honesty, respect and love to learn and in partnership with their families and the community.



# Our Vision Statement

Our vision is **'Let your light shine'**. The rainbow symbolises God's unconditional love for each individual. We seek to reflect that light in all we do: in our community, both local and wider, our communication, both word and action, with curiosity and courage, and with care and compassion for everyone, inspiring a love of learning.



# Our Aims

- ✓ To provide a safe, happy and inspiring environment to become confident individuals who can positively face the successes and challenges of life.
- ✓ To provide your child with the experiences, knowledge and academic skills to become successful life-long learners.
- ✓ To celebrate all that we are and all that we can be, underpinned by our vision, 'Let your light shine'.
- ✓ To ensure that we develop high standards; academically, socially, physically and spiritually.
- ✓ To promote consideration of others to be responsible citizens.

# Our Curriculum Drivers

## Curiosity and Courage



## Community



## Compassion



## Communication



# Ofsted Inspection - June 2022

Personal Development and Behaviour and Attitudes were both judged as 'Good'.

*'pupils enjoy coming to this nurturing and inclusive school where leaders and teachers want the best for the pupils and help them to succeed.'*

*'Leaders are keen to promote and nurture pupils' love of reading. They provide plentiful opportunities for pupils to read for pleasure.'*

*'Leaders have high expectations of behaviour. Pupils feel safe and bullying is rare.'*

*'Pupils throughout the school, including in the early years, behave very well. They are thoughtful towards others and try their best at all times and that staff identify and provide for the pastoral and wider needs of pupils with SEND.'*



# Progress since June 2022.....

- Safeguarding is now even more effective with the introduction of an electronic Safeguarding System for recording welfare concerns.
- Curriculum leaders have reviewed their curriculum subjects and are driving improvements in teaching and learning to accelerate pupil progress that leads to increased pupil attainment.
- Little Wandle Phonics programme is now embedded in EYFS, KS1, with keep-up and catch up interventions in KS2.
- EYFS have reviewed and enhanced their provision and staff have had further training and development.

# SIAMS Inspection April 2023...

‘With its current leadership, Winslow school is shining with increased power and brightness. The review of the Christian vision centred on improving learning outcomes. This is evident in the positive way pupils and staff engage with the rapid pace of change.’

‘In a relatively short time, leaders are effecting profound change to the curriculum and are consequently raising aspirations. This is because of the vision to instil a love for learning.’

‘Winslow school is on a rapid journey of development. The Christian vision is effective in shining light onto the next steps of that journey.’



**GOOD**



# Our school aims to provide a safe, happy and inspiring environment:



- ✓ Safe, secure and caring environment
- ✓ Experienced support staff, including a Mental Health and Wellbeing Lead Practitioner
- ✓ Music Room
- ✓ Woodland Area for outdoor learning opportunities
- ✓ Sensory Garden and Nurture Room
- ✓ Well resourced ICT room, Library and Reading Areas
- ✓ Reflection Areas in each classroom and around the school
- ✓ Kidzone Breakfast and After School Club
- ✓ Play Therapist

# Our school aims to develop academic flourish:

We will build on your child's knowledge through a rich variety of activities and experiences to develop their potential:

- ✓ High standards and expectations
- ✓ A team of Learning Support Assistants and SENDCO
- ✓ Specialist Sports Teachers
- ✓ Curriculum enrichment opportunities - visits, clubs, 'wow' events



# Our school encourages social development:

Our aim is to produce an atmosphere in which children can grow up with honesty and learn to accept responsibility with confidence.

- ✓ Curriculum activities that require collaboration, turn taking and sharing using resources that promote co-operation
- ✓ Roles of responsibility - including House Captains and Sports Leaders
- ✓ Recognising and rewarding achievements - inside and outside of school
- ✓ Year 4 and 6 Residential Visits
- ✓ Pupil Fundraising events and community activities

# A Church School

We are a church community and part of our duty is to instil a sense of spirituality in our children. We reflect on spiritual and moral values and do our best to give our children practical experiences to develop these for themselves.

We encourage and teach our children to treat everyone with respect, learn about the Christian faith and other faiths.

Our School values are distinctively Christian:

**Kindness, Forgiveness, Honesty, Respect and Love to learn**

# Starting School

How do we support your child in starting school at Winslow CE School?

- ✓ Smooth planned transition from Nursery/Preschool to Reception
- ✓ Induction evening for parents and transition sessions for children
- ✓ Staff visit feeder schools and carry out home visits
- ✓ Transfer documents/conversations
- ✓ Starting school booklet and induction booklet for parents

# Starting School

When your child starts at Winslow CE School...

- ✓ We aim to create a happy, exciting learning environment with a caring and nurturing atmosphere
- ✓ Staff and parents work together so children can feel safe and secure and develop their confidence
- ✓ We get to know your children really well over the first half term, settle them into new routines and support friendship building
- ✓ Encourage independence from the first day

# The Early Years Curriculum...

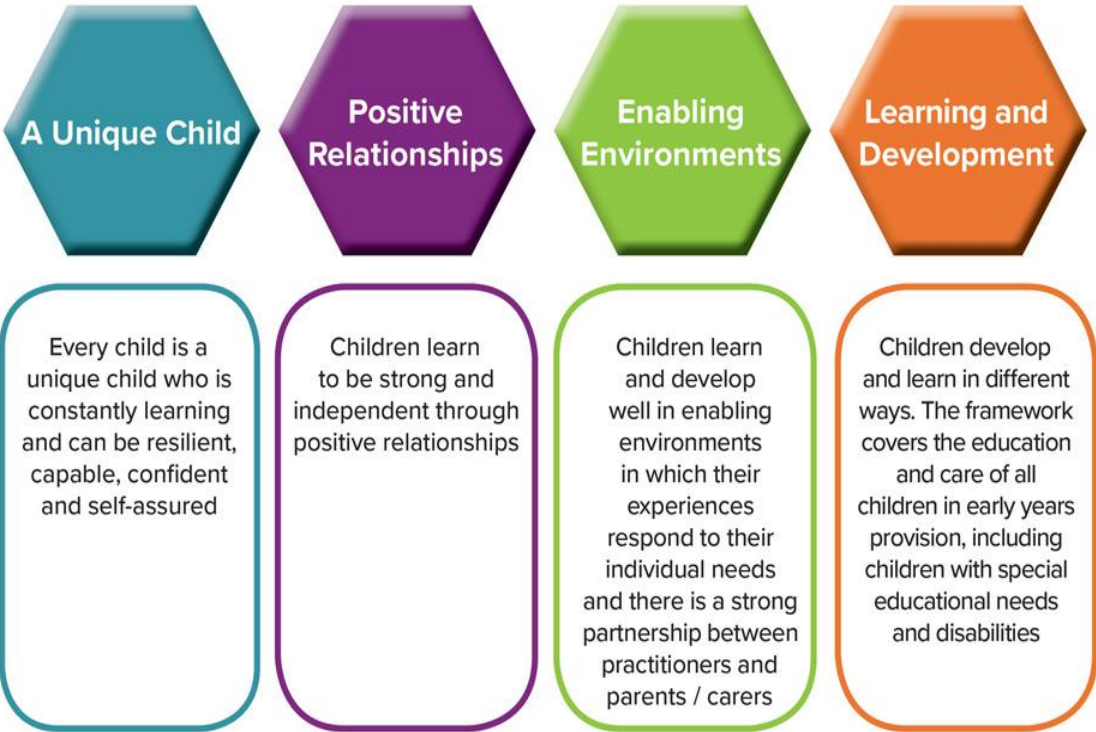
Based upon the 7 areas of learning:

**Prime Areas:** Personal, Social, Emotional Development; Communication & Language; Physical Development.

**Specific Areas:** Literacy; Mathematics; Understanding of the World; Expressive Art & Design.

The curriculum is delivered through a mixture of adult-led learning and child led learning, in a play based environment.

## The Four Guiding Principles of the Early Years Foundation Stage



# The Early Years Curriculum...

Our Curriculum is mapped around themes and within these, we look at different inspirations to inspire learning!

In the **Autumn Term**, our overarching topics are:

**It's Good to be Me!** and **A Dazzle & a Sparkle!**

In the **Spring Term**, our overarching topics are:

**Once Upon a Time...** and **How Does Your Garden Grow?**

In the **Summer Term**, our overarching topics are:

**Are We Nearly There Yet?** And **We're Not Scared!**





# The Early Years Curriculum...

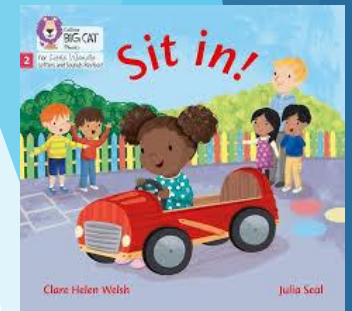
- ▶ Little Wandle Phonics Scheme- Daily sessions, 3 Guided Reading sessions a week and daily intervention keep up where required.

- ▶ White Rose Maths & NCETM Math's Mastery- Daily sessions.

- ▶ Poetry Basket Poems- Focus poems 4 termly

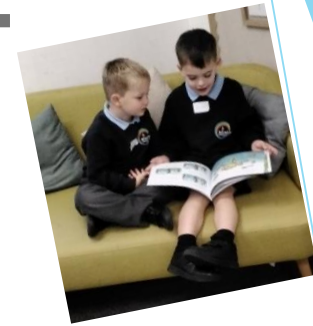


- ▶ Drawing Club- 2-3 sessions a week.



# Wider Curricular Activities...

- ▶ Library sessions



- ▶ Outdoor Learning



- ▶ School Trips & Visits for example, walk in the local area, visit to the farm, visit to the library and church.



# Our Preschool Aim:

At the end of **Preschool**, the aim is for all children in **Rainbows**, at Winslow C of E School to be able to:

- ▶ Have verbal and physical communication skills to express themselves.
- ▶ Interact with an adult/peer through play, taking turns.
- ▶ Listen and show interest to a subject or stimulus for a short period of time.
- ▶ Respond to boundaries.
- ▶ Make observations, notice things, and ask questions.
- ▶ Show an interest in holding and turning the pages of a book.

We believe these end goals best prepare children to transition into their next learning phase, allowing them to **'let their lights shine'**.



# Our Reception Aim:

At the end of **Reception**, the aim is for all children at Winslow C of E School to be able to:

- ▶ Have strong communication skills, both written and verbal to express themselves.
- ▶ Interact with an adult/peer through play, conversation and take turns.
- ▶ Listen respectfully and with tolerance to the views of others.
- ▶ Take pride in all that they do, always striving to do their best.
- ▶ Demonstrate emotional resilience and the ability to persevere when they encounter challenge.
- ▶ Develop a sense of self-awareness and become confident in their own abilities.
- ▶ Show that they are kind, respectful and honest.
- ▶ Demonstrate inclusive attitudes and have a sense of their role in our wider society.
- ▶ Make observations, notice things, and ask questions to demonstrate their curiosity of the world around them.

Alongside, achieving Early Learning Goal's (ELG's) across the seven areas of learning.

We believe these end goals best prepare children to transition into their next learning phase, allowing them to **'let their lights shine'**.



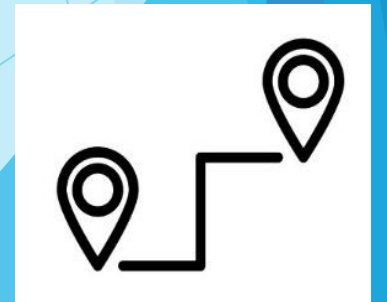
# Transitions...

## Rainbows:

- ▶ Stay & Play Sessions with caregivers which then lead onto, shorter sessions alone before officially starting full sessions- this is planned in accordance with your child settling.
- ▶ Opportunities for Class Teacher/Key Worker and parents to meet.
- ▶ Transition meeting/conversations with previous settings.

## Reception:

- ▶ Stay & Play sessions in June with parents after school.
- ▶ Parents Information Meeting
- ▶ Transition Morning in July with class teacher and peers.
- ▶ Transition visits and meetings with current settings.
- ▶ Home visits in June/July.
- ▶ Social Stories provided for each child.
- ▶ Class Dojo updates before/over the summer holidays.



# Parental Partnership...

- ▶ Stay and Play sessions
- ▶ Parents Evening Consultations
- ▶ Communication at the beginning and end of day/ through class Dojo- adding photos and comments to portfolios.

# How to support your child when starting Reception...



- I am able to use the toilet independently.
- I am able to wash my hands.
- I can get myself dressed/undressed- coats on and off.
- I can sit at a table when I eat.
- I can use my words to communicate with adults and my friends.
- I can communicate how I am feeling.
- I am able to choose what I would like to play.
- I am able to make some new friends.
- I enjoy playing and interacting with others.
- I know how to take turns.
- I can follow instructions.

# A 'snapshot' of learning in Early Years...





# Any Questions?

